

Trackscan Sharp49 Release

Trackscan Sharp49



Trackscan Sharp49

- **High precision and wide range tracking 3D scanning system**
- Scantech Trackscan Sharp49 is the most accurate dual camera tracking system;
- Large tracking range in space;
- The most stable connection method;
- One station measurement for large parts;
- Compatible with all accessories of Scantech tracking series products: airgo, light pen, ihole optical module;

Trackscan Sharp49

- 25 megapixel industrial camera
- Built in infrared light compensation module (human eye safety)
- High definition industrial lens



Link status LED display bar

Trackscan Sharp49

Rear view

- Internal operation indicator light
- Power interface



- Gigabit Ethernet port suitable for industrial site use
- External USB wireless network card slot



Trackscan Sharp49

- Length: 1003mm
- Width: 157mm
- Height: 150mm
- Weight: 6.8kg



Trackscan Sharp49

- Blue laser scanner
- Carbon fiber frame structure
- 42 crossed blue laser beams
- 7-line fine parallel laser
- 1 deep hole mode laser



Trackscan Sharp49

- Other components



Cylinder Magnetic Target



Power-HUB
Extension
Module



Master Plate

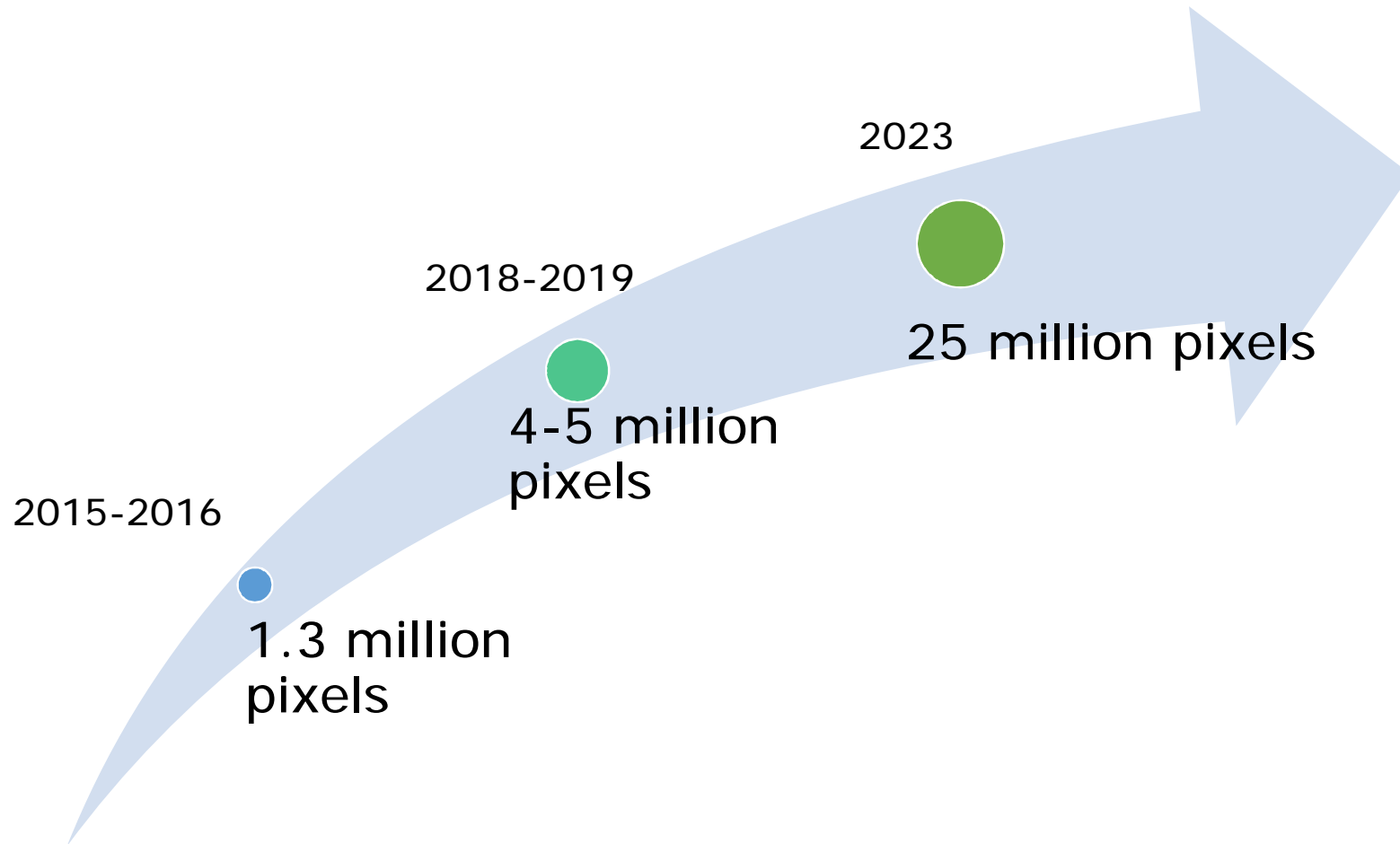


Calibration
Bar

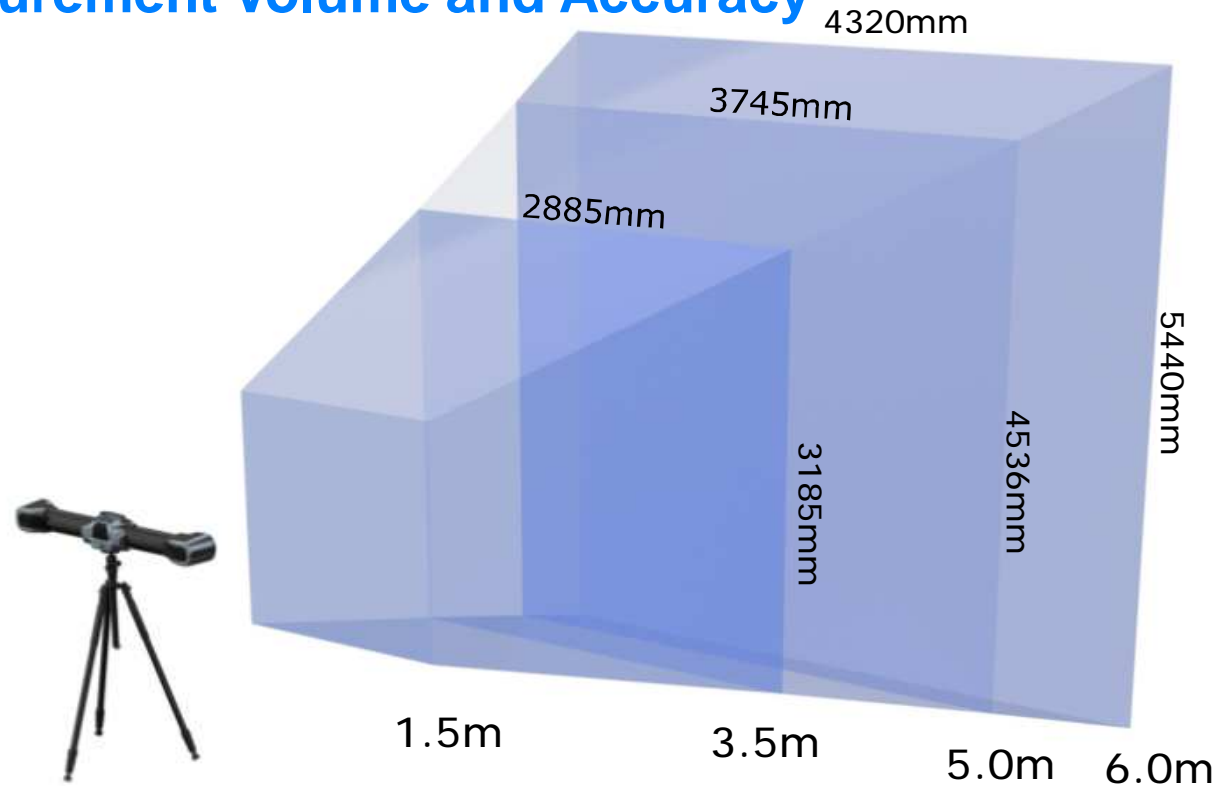


Tripod

Several stages of pixel development in tracking devices



Trackscan Sharp49 Measurement Volume and Accuracy



- 10.4m³ Distance tracker 3.5m **Accuracy** 0.049mm
- 28.6m³ Distance tracker 5m **Accuracy** 0.067mm
- 49.0m³ Distance tracker 6m **Accuracy** 0.089mm

Trackscan Sharp49 Packaging



- **Sensor Case** 1270mmX464mmX356mm



- **Scanner case** 664mmX499mmX329mm

Computer Configuration Requirements

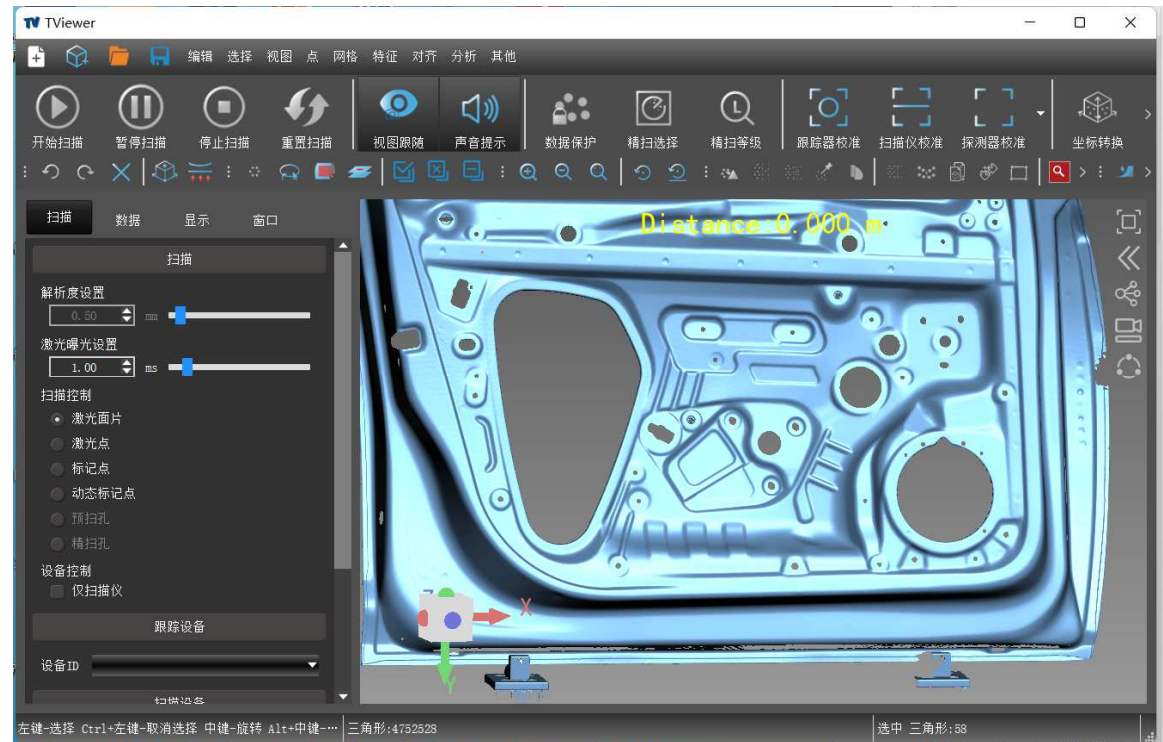
- **Recommended configuration :**

DELL 7670(i9-12950HX,RTX A2000 8G,64G内存,1T SSD, WIN 11 Professional Edition)



Trackscan Sharp49 software

- **Tviewer 3.3.0**
- Calibration
- Dynamic tracking scanning
- Probing
- Hole measurement
- Supports Polyworks, Gomspect professionalControl X for Scantech, Verisurf



Trackscan Sharp49 Optional Accessories



wireless
network
adapter



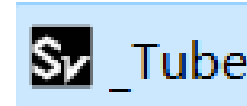
HoleInspect
Module



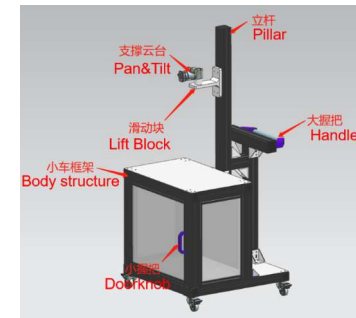
i-Probe



Airgo



Tube



Mobile Measuring Trolley

Trackscan Sharp49 USP

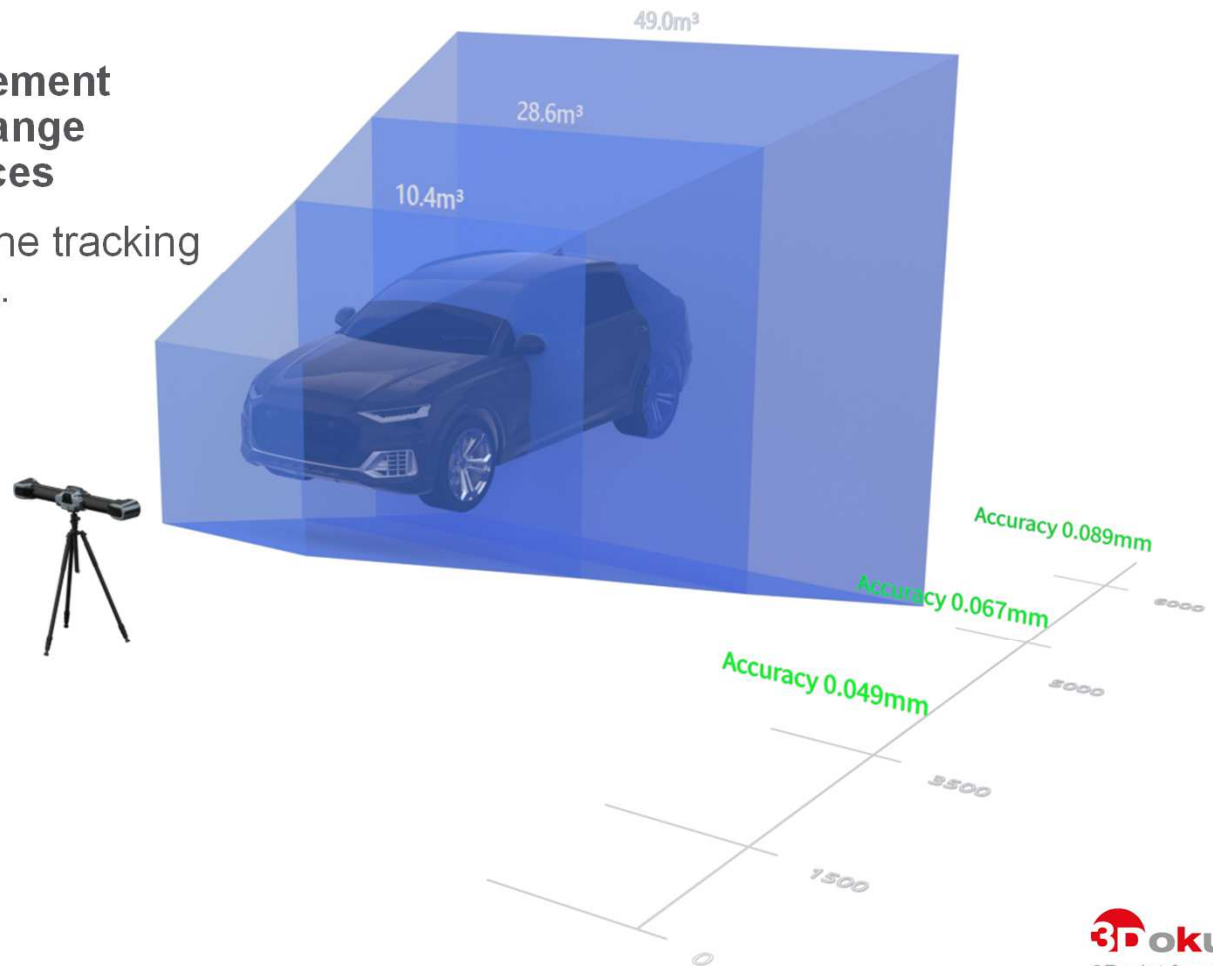
- Trackscan Sharp49 is the most accurate dual camera tracking system
- Tracking 3D scanner accuracy improved to 10.4m³ To 0.049mm; The accuracy has been improved by 23.4%.

Trackscan Sharp49 USP

- Trackscan Sharp49 is the measurement system with the farthest tracking distance among dual camera tracking devices
- Sharp49 tracking distance has been increased from 4.2 meters to 6.0 meters, increasing to 142.8%

Trackscan Sharp49 USP

- Trackscan Sharp49 is the measurement system with the largest tracking range among dual camera tracking devices
- Sharp49 tracks volume to 49m^3 , The tracking volume has been increased to 300%.

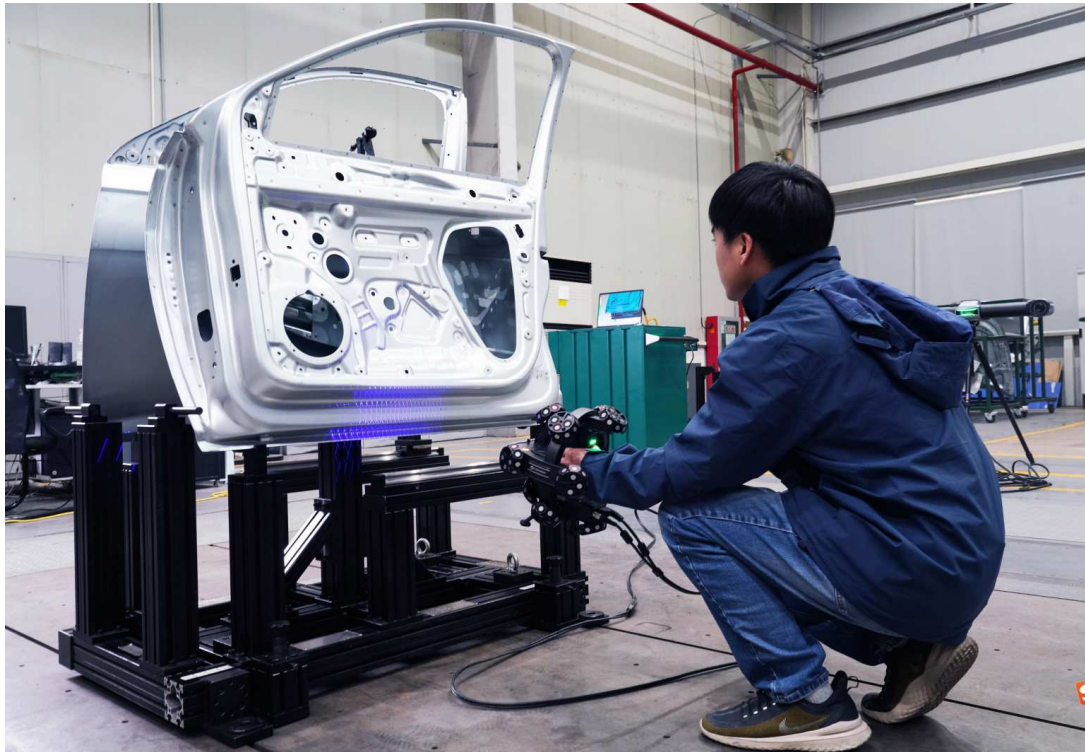


Trackscan Sharp49 USP

- **Trackscan Sharp49 interface**
- Supports both gigabit and wireless network transmission
- Sharp49 adopts gigabit network transmission that is much higher than USB interface, making it more suitable for industrial sites.
- Sharp49 supports WiFi transmission, and wireless transmission can be achieved by simply inserting a wireless network card.

Trackscan Sharp49 Application

- Scanning



Trackscan Sharp49 Application

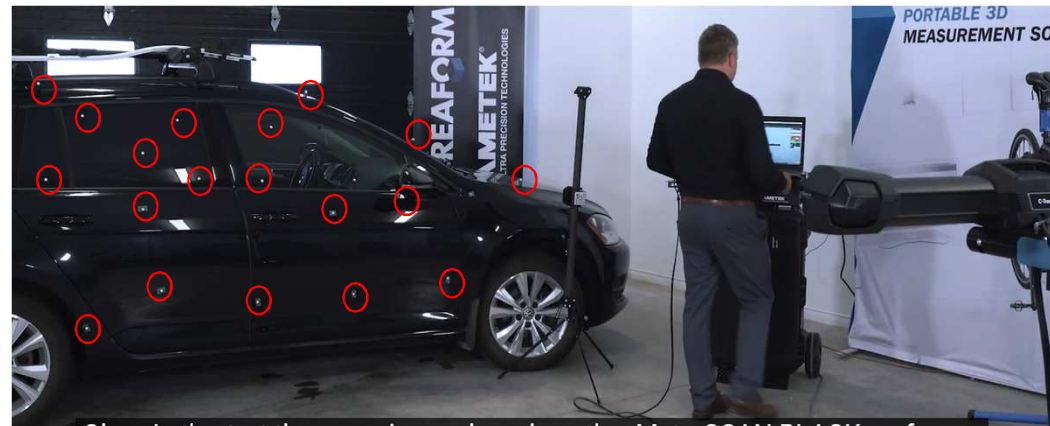
- Probing



Trackscan Sharp49 Sales Strategy

- **Trackscan Sharp49 VS Other Dual Camera Visual Tracking Systems**
- Sharp49 is the most accurate dual camera visual tracking system (other manufacturers have lower accuracy than Sharp49)
- The tracking system with the largest tracking range (Sharp49's tracking range is 49m³, Other manufacturers are 16.6 meters³)
- The tracking system with the farthest tracking distance (Sharp49 has a tracking distance of 6m, while other manufacturers have a tracking distance of 4.2m)

The marking points that need to be affixed to the scanned parts of Creaform
Sharp49 scanning of the side wall does not require sticking points



Purchase truck tonnage rhetoric

Do you want to purchase a truck with a load capacity of 5 tons or an 8 ton load capacity when pulling 5 tons of goods each time?



5T

VS



8T

Trackscan Sharp49

- **Top 5 feature list**
- Trackscan Sharp49 is the most accurate dual camera visual tracking system
- The tracking system with the largest tracking range
- Tracking system with the farthest tracking distance
- Adopting more stable gigabit network transmission
- Industry's highest 25 megapixel tracking camera

Trackscan Sharp49

- **Elevator Pitch**
- Trackscan Sharp49 uses a 25 megapixel industrial camera and is the most accurate dual camera visual tracking system at 10.4m³. The accuracy reaches 0.049mm, the tracking distance reaches 6m, and the tracking volume reaches the industry's highest 49m³. Trackscan Sharp49 supports 3D scanning, light pen detection, and other on-site detection requirements for different occasions.

THANK YOU !

SCANTECH

To be a world-leading brand of 3D digitization



02509-99 305-0



info@dokuteam.de



www.3dookuteam.de

